



REPORT TO THE MEETING OF CABINET – 16 OCTOBER 2024

PORTFOLIO: STRATEGIC PLANNING AND DEPUTY LEADER – CLLR W GIBSON

REPORT FROM ASSISTANT DIRECTOR, CLIMATE AND GROWTH

SUBJECT: ESSEX LOCAL TRANSPORT PLAN 4

1 PURPOSE OF REPORT

- 1.1 The purpose of this report is to ensure that the Cabinet is aware of the proposed Local Transport Plan 4 (LTP4) and the potential implications this has for Castle Point.

2 LINKS TO COUNCIL'S PRIORITIES AND OBJECTIVES

- 2.1 This report links to the Council's priorities around people, place and economy. The approach to transport also impacts on Environment.

3 RECOMMENDATION

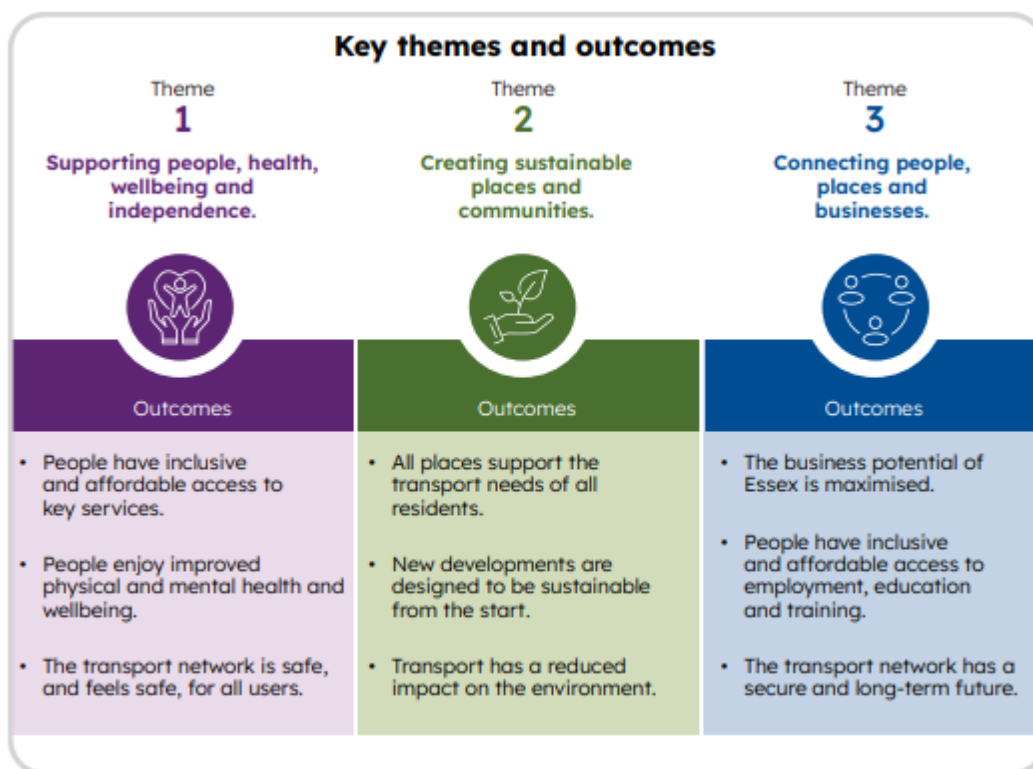
- (1) That Cabinet notes the [Portfolio Holder decision](#) setting out a response to the consultation on Essex Transport Strategy Part 1 consultation
- (2) That Cabinet requests that the County Council fully involves Members at Castle Point Borough Council in the development of the Essex Transport Strategy including the area based plan that covers Castle Point.

4 INTRODUCTION

- 4.1 Transport matters and transport improvements are significant local matters for residents and impact on the Council as the local planning authority. However, transport is the responsibility of Essex County Council (ECC) as the upper tier authority in respect of Castle Point. It is ECC who are responsible for planning and delivering transport improvements across the area, albeit there is a strong interaction with the planning system in this regard.
- 4.2 [The Essex Transport Strategy – Local Transport Plan – Part 1 Public Consultation document](#) was published in August 2024 and was available for comment on until 22 September 2024. As this consultation occurred over the summer period, a response to the consultation was issued via a [Portfolio Holder decision](#) on the 23 September 2024.

5 SUMMARY OF THE ESSEX TRANSPORT STRATEGY PART ONE CONSULTATION

- 5.1 It is intended that the new Essex Local Transport Plan (LTP4) will replace the existing Local Transport Plan (LTP3) which was adopted in 2012.
- 5.2 It will comprise of a Transport Strategy and area-based plans and a programme of planned investment. The consultation undertaken over the summer was on the Transport Strategy element of the proposed LTP4 only. It did not cover the area-based plans and a programme for planned investment. Further consultation on those elements is planned for 2025.
- 5.3 The consultation undertaken was on the key themes and outcomes to be achieved through LTP4 and is high level. The three key themes and outcomes are as follows:



- 5.4 Fundamentally, these are reasonable themes and outcomes, and generally address the issues that residents raise through consultation responses to the Castle Point Plan.
- 5.5 The consultation document also sets out some key activities for achieving these themes and outcomes. As set out in the draft, these proposed activities lack detail and as worded are not particularly ambitious or forward thinking.
- 5.6 To this end, the Council's response proposed a series of more ambitious activities that could be taken forward to enable transformation of transport provision in Essex. These proposals included activities relevant to Castle Point including improved access to Canvey and congestion relief at key junctions and on key routes, and crucially, supporting economic growth, access to jobs, skills and training for local businesses and people.
- 5.7 Another key component of the consultation was a proposal to change the approach to classifying roads. The proposed approach is called the Place and Movement approach and considers not just how a road is used by powered vehicles, but also how it is used by people. This would see the system of classification shift from a three-grade classification system to a nine-grade classification system, explained in the diagram below.

Members at Castle Point Borough Council, and indeed with other district, borough and city councils across Essex.

- 6.4 It is therefore proposed that in follow up to our consultation response on the part 1 consultation on LTP4 that we write to the County Council asking for Members at Castle Point to be fully involved in the future development of LTP4, including the development of the area-based plan relevant to the borough.

7 OPTIONS

- 7.1 Option 1: **Do nothing.**

- 7.2 Option 2: **Write to ECC** requesting that Members of the Council are fully involved in the future development of LTP4, including the development of the area-based plan relevant to the borough.

- 7.3 Preferred Option: **Option 2** is preferred. If the Council chooses not to write to ECC on the matter of engagement in relation to LTP4 it is probable that future consultation will take the form of that undertaken in August/September 2024. If the Council does write to ECC requesting additional involvement, it is more likely to be able to have an influence on transport policy as it affects the local area, improving outcomes.

8 RISK IMPLICATIONS

- 8.1 There are no significant risks associated with the recommendation of this report.

9 FINANCIAL IMPLICATIONS

- 9.1 There are no financial risks associated with the recommendation of this report.

10 LEGAL IMPLICATIONS

- 10.1 There are no legal risks associated with the recommendation of this report.

11 HUMAN RESOURCES IMPLICATIONS

- 11.1 There are no human resource implications associated with the recommendation of this report. The proposed actions can be undertaken within the capacity of existing resources.

12 EQUALITY AND DIVERSITY IMPLICATIONS

- 12.1 An equality impact assessment has not been completed as the only decision being sought is to ask for further engagement in the preparation of LTP4.



Amanda Parrott

Assistant Director, Climate and Growth

Background Papers:-

[The Essex Transport Strategy – Local Transport Plan – Part 1 Public Consultation document](#)

[Portfolio Holder Decision: Essex Transport Strategy Consultation - 23/09/2024](#)

For further information please contact Amanda Parrott on:-

Phone: 01268 882432

Email: aparrott@castlepoint.gov.uk